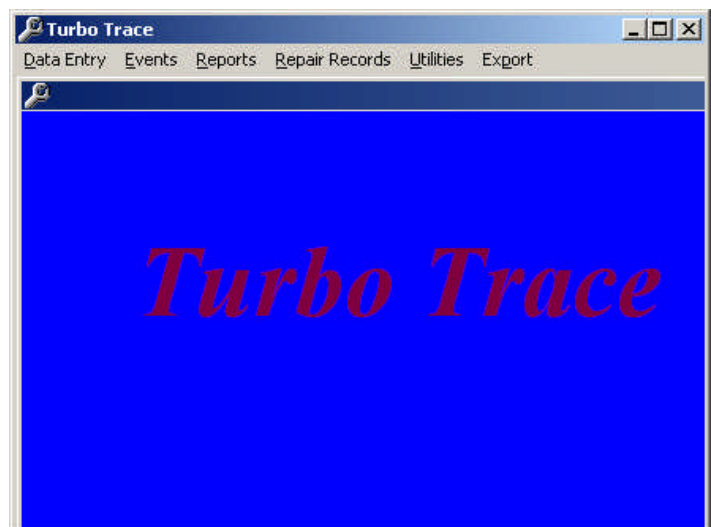


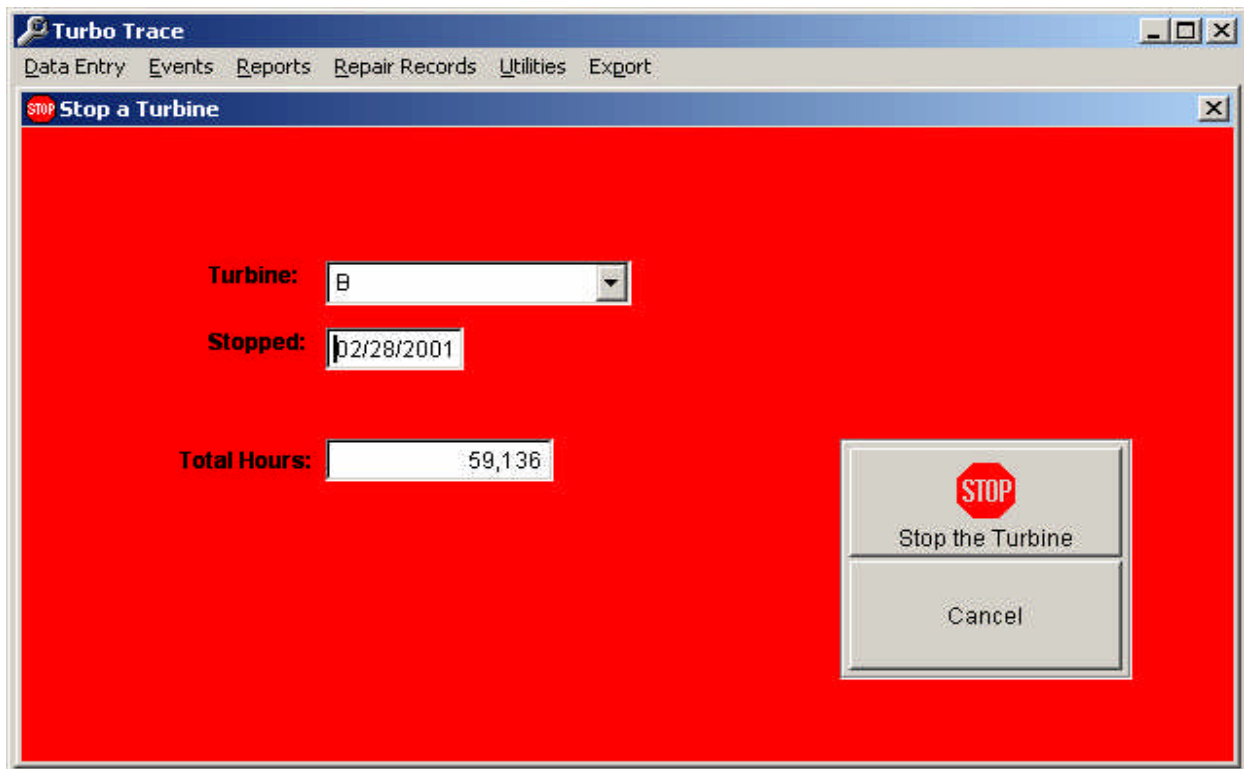
# Do You Know Where Your Parts Are?



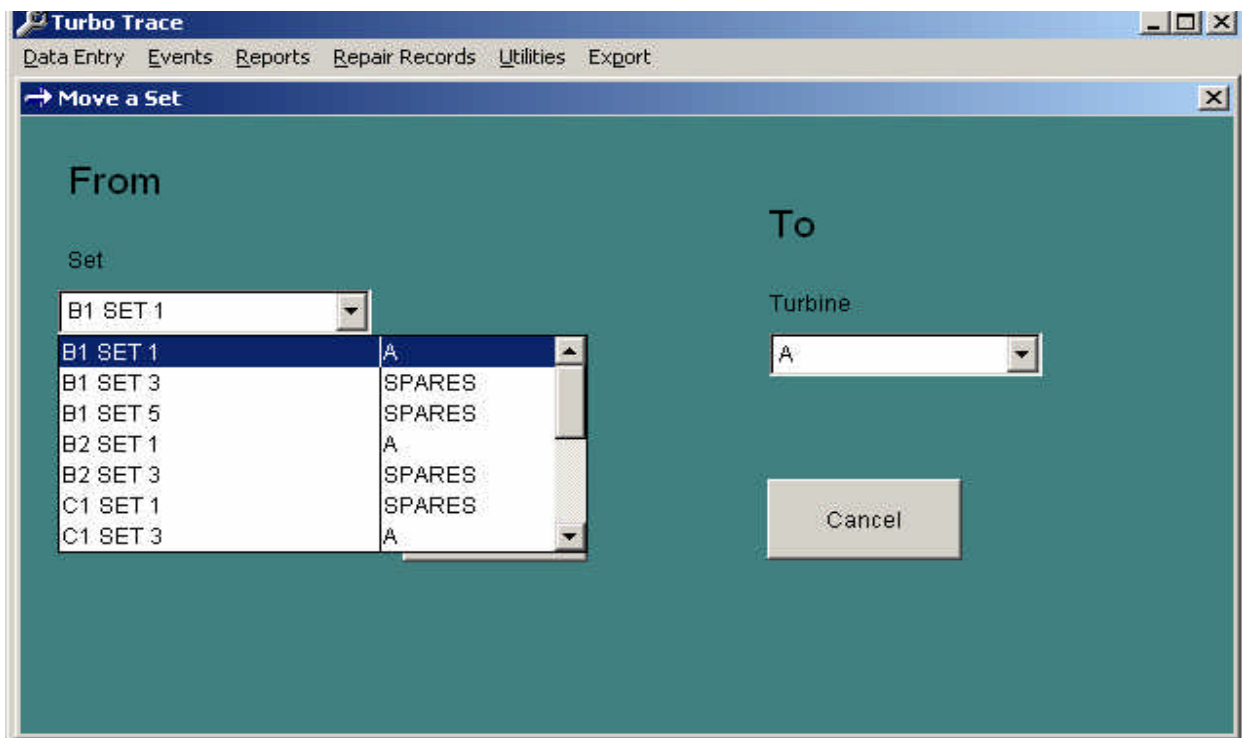
TurboTrace parts tracking software lets you access parts location, operating and repair history, and current operating hours for all of the turbines in your fleet with a few simple mouse clicks.



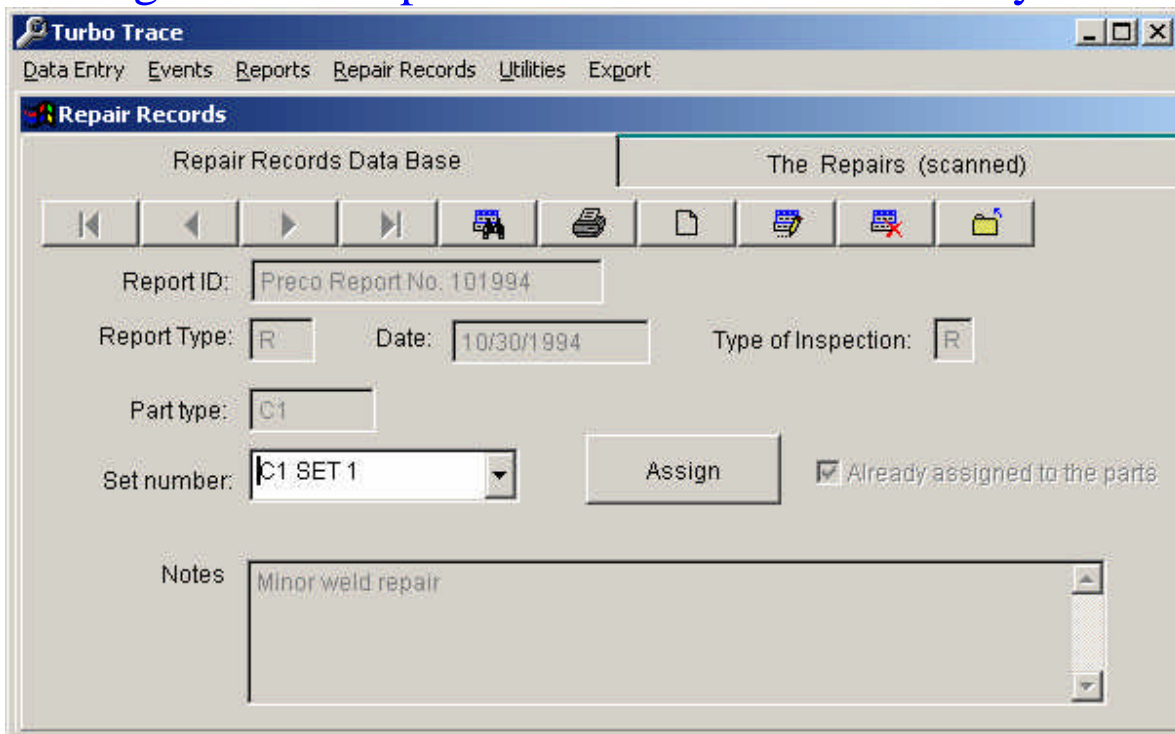
Global commands reduce data entries to a few simple operations



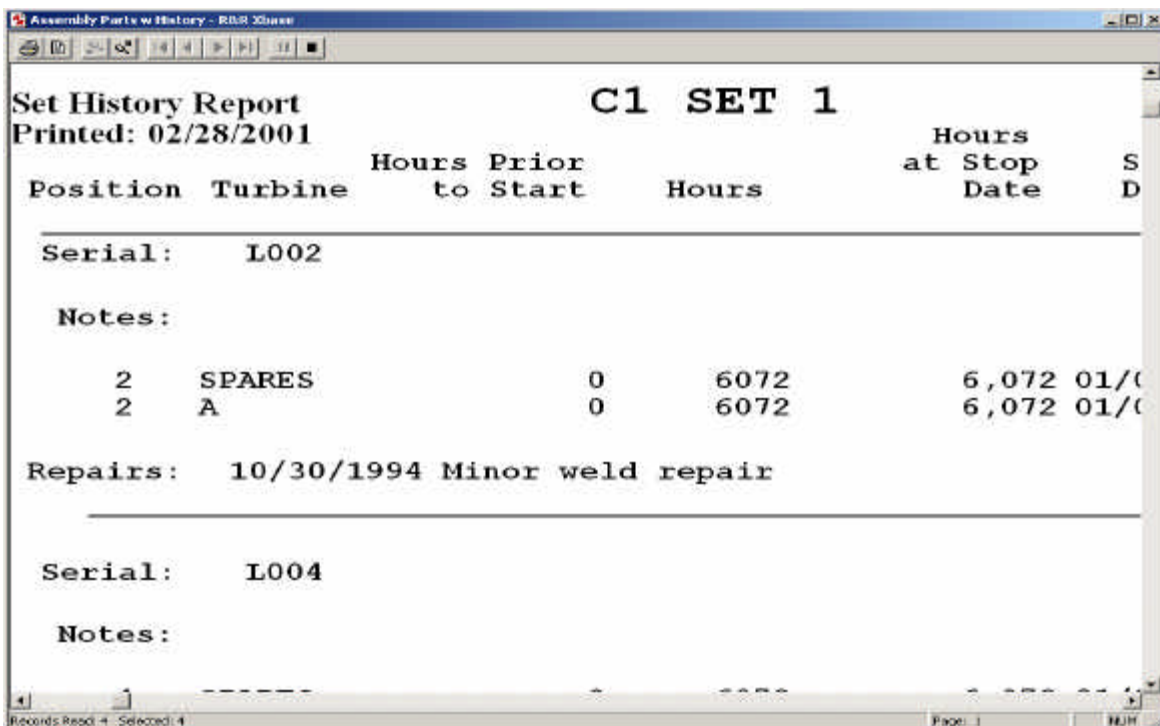
Record turbine starts and stops, move sets of parts to and from the spares warehouse to the turbine with ease. All changes are automatically recorded in the secure database.



Extracting data and reports from the database is easy and flexible.



- Tie outage reports to every part in the turbine.
- Set repairs can be tied to every part in the set.
- Report part history by turbine, set or serial number.
- Export the database to MS Excel, Lotus or Access.



# ***Turbo-Trace***

## **COMPONENT TRACKING PROGRAM**

**PROBLEM:** Gas turbine components often have finite lives. They must be replaced within recommended intervals or failure could result. These components (most commonly turbine blades, stator vanes, combustor hardware) are very expensive and are often refurbished. The refurbishment may or may not recover the full life of the part.

The large number of replaceable parts (up to 800 in some turbines) can be difficult to inventory and track to ensure that no parts exceed their recommended operation interval before replacement. Manual tracking of the histories of these parts is labourious and time consuming. Errors and oversights can occur, and personnel changes can result in a serious loss of continuity.

**SOLUTION:** This tracking program allows inventory control, operation history and repair history to be easily available to rotating equipment engineers, purchasers and inventory control staff. A database template has been developed with forms and reports that have been carefully designed to meet the needs of gas turbine operations and maintenance personnel. Customizing is available to meet specialized user needs. Experienced programmers working with gas turbine reliability engineers ensure that the users' requirements will be met.

Once the initial data input has been achieved, minimal manual input of data is required. Global commands allow whole sets or selected groups of parts to be grouped, moved from location to location, annotated or flagged. Time in service is automatically accounted for to provide operating hours and other critical operating information. Individual part histories can be retrieved with ease.

Assistance with custom requirements, data input and ongoing support is readily available. Or, let us contract to manage your part tracking requirements using our experienced, skilled team.

For more information or a demonstration, contact us today at:

## **BWD TURBINES LIMITED**

ADVANCED TURBINE TECHNOLOGIES FOR THE INDUSTRY WORLDWIDE

**1-601 TRADEWIND DRIVE  
ANCASTER, ONTARIO,  
CANADA L9G 4V5**

**PHONE: 905-648-9262  
FAX: 905-648-9264**

**Web Site: [www.bwdturbines.com](http://www.bwdturbines.com)**